

The graphic features three green spheres of different sizes. The largest sphere is at the top right, a medium-sized one is in the center, and a smaller one is at the bottom right. Two thin green lines originate from the top left and extend towards the spheres, one passing through the top sphere and the other passing through the middle sphere. The bottom right sphere is partially cut off by the edge of the page.

Sampson County Health Department

Annual Report July 2010-June 2011

Public Health: Everywhere, Everyday, Everybody

Table of Contents

	Page
Message from Health Director	3
Sampson County Board of Health Members	4
Health Department Management Team	5
Health Department Mission, Vision, and Values	6
Health Department Highlights	7
Health Department Services	8
Adult Health	9
Prescription Assistance Program	10
Breast & Cervical Cancer Control Program	11
Child Health	12
Care Coordination for Children	13
Maternal Health	14
Pregnancy Care Management	15
Women, Infant, and Children	16
Family Planning	17
Immunization	18
Diabetes Self-Management	19
Communicable Disease	20
Tuberculosis	21
Sexually Transmitted Disease	22
Laboratory	23
Other Health Department Services	24
Health Promotion/Health Education	25
Environmental Health	26
Dental Health	27
Vital Records	28
Public Health Preparedness & Response	29
Health Department Budget	30
Total Budget/Program Cost By Revenue Source	31
Budget by Revenue Source Graph/Breakdown	32
Total Budget by Program	33
Budget by Program Graph	34
State Revenue	35

Everywhere



A Message from the Health Director...



On behalf of the staff of the Sampson County Health Department, I am pleased to present our 2010-2011 Annual Report. This past year has presented many challenges for our health department. The changes in case management services, continuation of problems with the Health Information System (HIS), the state budget crisis, and the uncertainty in funding for preventative health services were just some of the challenges that we faced this past year.

Everyday

The Health Department celebrated its' first accreditation through the North Carolina Accreditation Board. This was an involved process in which the health department met the standard of care for health department services. The health department and Sampson County Partners for Healthy Carolinians collaborated with the North Carolina Farm Bureau as a part of the North Carolina Farm Bureau's Healthy Living for a Lifetime initiative. The 2nd annual Holiday Health Fair was a success. The theme "Enjoying the Holidays with Diabetes" allowed the Health Department to promote the Diabetes Self Management Program. Hopefully, this program will continue to grow in the future.



In conclusion, this report will show you the numbers that the health department produced this past year. However, what this report cannot show is the dedication that the staff has for their clients. We ask many things from our staff and duties are increasing as we are forced to do more with less. Many times I have seen staff assist clients with purchasing items such as food, clothing, Christmas gifts and school supplies. Some of the staff work at home on their own time, visit clients at home or go to the hospital to visit them.

Everybody

Please remember as you read this report that it is the staff that makes the Sampson County Health Department the success that it is.



SAMPSON COUNTY BOARD OF HEALTH MEMBERS

Steve Bass - Pharmacist

Shannon Matthews- Nurse

Dr. Ted Bauman-Physician

Linda McKenzie- General Public

Paul Bradshaw – General Public

Jarvis McLamb- Commissioner

Dr. Ron Faircloth-Optometrist

Dr. Beth Turner- Veterinarian

Jason Walters- Engineer, Co-Chair

Amy Fann- General Public

Dr. Ted Thomas - Dentist, Chair



HEALTH DEPARTMENT MANAGEMENT TEAM



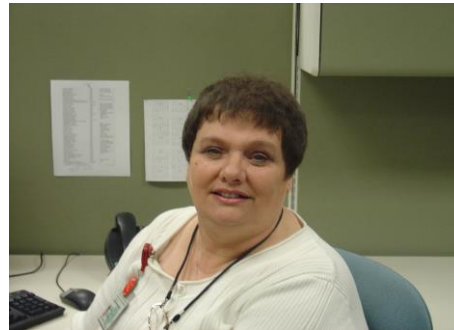
Wanda Robinson
Health Director



Teresa Underwood
Environmental Health Supervisor



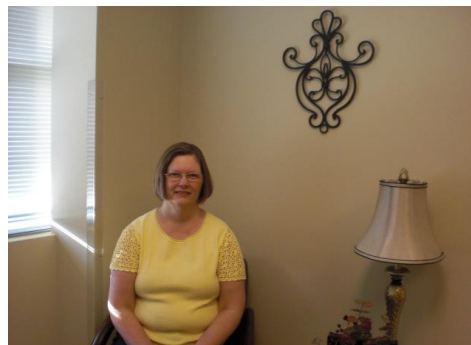
Betty Britt
WIC Director



Kathie Johnson
Director of Nursing

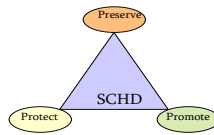


Donna Banks
Accounting Specialist



Cheryl Norris
Administrative Assistant

MISSION, VISION, AND VALUES



MISSION

The mission of Sampson County Health Department is to preserve, protect and promote the health, environment and well-being of the citizens of Sampson County.

VISION

The vision of Sampson County Health Department is to provide services, prevent adverse outcomes and promote efforts to improve the quality of life for the residents of Sampson County.

VALUES

Caring- We will be compassionate when dealing with others and to show concern for the interest and needs of others.

Commitment- We will be dedicated, loyal and empathetic in what we do for the customer and the public.

Communication- We will provide direct, sincere communications to customers, the public and co-workers.

Community Service- We will provide services to the community through education, outreach and other venues to help ensure the health, safety and welfare of the community.

Excellence in Customer Service- We will meet or exceed customer expectations.

Privacy- We will respect the confidentiality and privacy of others and be committed to confidential care for customers and the public.

Professionalism- We will treat customers and co-workers with DIGNITY, RESPECT, INTEGRITY and COMPASSION at all times.

Productiveness- We will work to the best of our ability to provide efficient, effective, quality care for our customers and the public.

Responsibility- We are accountable to customers and the public for what we do.

Teamwork- We will work together to provide the best possible care for customers and the public. There is no "I" in team.



- The Sampson County Health Department celebrated its first accreditation through the North Carolina Local Health Department Accreditation Board with a special ceremony on September 29, 2011. The health department was notified that it had met the requirements for full accreditation status in May 2011. Joy Reed, EdD, RN Branch Head of Public Health Nursing presented an accreditation plaque to the department staff during the celebration.
- The North Carolina Farm Bureau and the Sampson County Farm Bureau donated \$5,000 to the local medical community (Sampson County Health Department and Sampson County Partners for Healthy Carolinians) in Sampson County as part of the North Carolina Farm Bureau's Healthy Living for a Lifetime initiative.
- The 2nd Annual Holiday Health Fair, "Enjoying the Holidays with Diabetes," was a huge success. The Sampson County Health Department and Clinton City Parks and Recreation partnered to provide Sampson County's diabetics and pre-diabetics with a host of screenings such as the UNC Kidney Mobile Unit, Matthews Health Mart, Clinton Drug Co., Sampson Community College, Goshen Medical Center, Campbell University College of Pharmacy and Health Sciences, NC Oral Health Section, CommWell Health, and Carolina Eye Care Professionals to name a few. Red balloons were released into the air in honor of those who have lost their struggle due to complications of diabetes.



HEALTH DEPARTMENT CLINICAL SERVICES

ADULT HEALTH

The Adult Health Program offers physical exams and primary care to women and men ages 21 years of age and older. The program also provides sports and college physicals for female adolescents playing sports or entering college. Services include: work, college and sports physicals; screening for minor medical problems, such as UTI or Otitis Media; and medical screening and physical exams for men and women. Screenings may include: a detailed medical history; vital signs; immunizations; TB skin testing; a complete physical exam; and lab testing, such a Pap Smears, HIV testing and Syphilis screening.

The Adult Health Coordinator provides follow-up on any abnormal findings identified during the Adult Health screening exams.

Statistics:	2009-2010	2010-2011
Employment physical	23	42
Sports physical	3	16
Physical Exams	341	274
College physical	55	61
Total	422	392

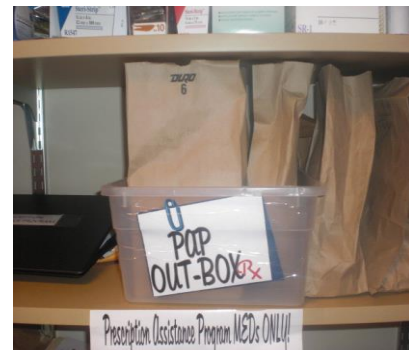
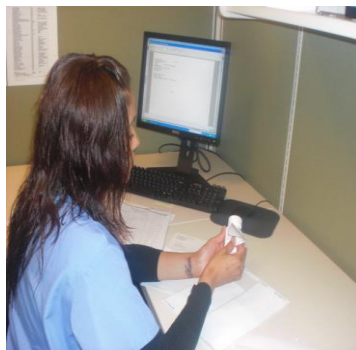


PRESCRIPTION ASSISTANCE PROGRAM (PAP)

This program is for those who are uninsured and cannot afford their prescription medications. The PAP will help potential patients determine whether or not they qualify (by income and household size) and determine if their prescription medications are included in a U.S. Pharmaceutical Program.

The patient must not be eligible for any other type of prescription coverage for that particular medication, including Medicaid, VA, Private insurance, etc. The household income generally must be less than 200% of poverty level, though this varies by Pharmaceutical companies, and some Medicare individuals that have reached the Part D gap.

Statistics:	2009-2010	2010-2011
New Patients	59	92
Patients Served	54	92
New Requests	232	296
Reorder Requests	0	50
Medication Requested	207	294
Medication Received	18	117
Medications Delivered	16	91
Active Request	78	184
Closed	267	278
Filled	56	63



BREAST AND CERVICAL CANCER CONTROL PROGRAM (BCCCP)

Breast and Cervical Cancer Control Program (BCCCP) works to detect breast and cervical cancer among qualifying women who are 40-64 years of age, who are uninsured and underinsured and do not have Medicaid or Medicare. The BCCCP Coordinator also helps women apply for Breast and Cervical Cancer Medicaid, which helps women who have been diagnosed with breast or cervical cancer with their medical costs. The clinic provides a medical exam, pap smears, and mammograms.

As a part of outreach, the health department displayed the Button Chair. The Button Chair was created in 1998 as a tribute to all women – as well as their families, friends and support networks – who have battled breast cancer in North Carolina. Every button represents a unique story of courage and strength, each having belonged to a breast cancer survivor or someone who lost their battle with the disease. The purpose of the exhibit is to educate visitors about breast cancer, to encourage women to get mammograms and to deliver messages of hope from survivors who have overcome the disease. The display is a dynamic, interactive experience highlighted by the glass enclosed Button Chair and four hands-on, educational kiosks. Two of the exhibit's kiosks contain touch-screen monitors with programming featuring breast cancer facts, resources and information concerning mammograms.

United Way and The Sampson County Breast and Cervical Cancer Advisory Board co-sponsored the 12th Annual Breast and Cervical Cancer Awareness Rally and Health Fair. The goal for the rally was to educate women on breast and cervical cancer and the importance of early detection. The rally began at the courthouse steps and proceeded to the Clinton Family Worship Center on Raiford Street, located in Clinton. It was a great success with over 150 participants in attendance.

Statistics:	2009-2010	2010-2011
Clients	117	59



CHILD HEALTH

The Child Health Clinic offers services to children and adolescents ages birth-21 years old. The clinic provides comprehensive health screenings that include complete physical exams and developmental screening for clients. The program also provides immunizations, hearing, visual dental screenings and dental varnishing to qualified clients. The clinic is held once weekly to provide services for children entering Head Start, Pre-Kindergarten, More @ Four, and Kindergarten classes.

Statistics:	2009-2010	2010-2011
Physical/Screening	204	135
Developmental screening	114	92
Hearing screening	117	127
Visual screening	119	123
Dental screening	204	40
Dental Varnishing	92	28
Newborn Home visiting	139	146
Total	989	691



CARE COORDINATION FOR CHILDREN (CC4C)

Care Coordination for Children (CC4C) is a new program transitioning the Child Service Coordination (CSC) program into a population management model in partnership with Community Care Networks (CCNC) that seeks to improve health outcomes for children aged 0-5 with measures to:

- Increase in NICU graduates who have their first medical home visit within one month of discharge.
- Increase percent of Children with Special Health Care Needs (CSHCN) and foster care children enrolled in a medical home.
- Increase the number of infants less than one year of age referred to Early Intervention.
- Reduced rates of hospital admissions, readmissions and emergency department visits.
- Increase Comprehensive Health and Life Skills Progression (LSP) Assessments on children receiving CC4C care coordination.

The program targets the high risk and highest cost children for care management.

Effective March 1, 2011, CC4C transitioned from billing in units to Division of Medical Assistance (DMA) reimbursing the health department on a per-member, per-month system. Since the initiation of the new program, CC4C has provided services to 220 participants.

2009-2010: 3,800 units **2010-2011:** 1,843 units



MATERNAL HEALTH PROGRAM

The Maternal Health Program offers prenatal services Monday-Friday to the pregnant women of Sampson County. The program works in conjunction with Social Services, Sampson Regional Medical Center, local physicians, and other resources to strive towards the goal of reducing infant mortality and assuring healthy mothers and infants.

When pregnancy is suspected, women are encouraged to have a pregnancy test and if positive, the next step would be to schedule a prenatal appointment. Maternal Health services include: one-on-one prenatal visits with specialty trained nurses, physical examination, laboratory services, referral and follow-up, WIC services, parenting education, and case management. We accept private insurances and Medicaid; and services may be based on a sliding scale fee.

Another part of the Maternal Health Program involves the Postpartum/Newborn Home visits. This program involves health department nurses providing home visits to new mothers and infants. The visit includes a physical assessment of the mother and infant and referrals for any problems that are identified during the visit.

Statistics:	2009-2010	2010 – 2011
Clinic Visits:	2, 896	2,782
Postpartum Home Visits:	149	153
Total	3,045	2,935



PREGNANCY CARE MANAGEMENT (OBCM)

The Sampson County Health Department has transitioned from Maternal Outreach Workers to a new program, Pregnancy Care Management (OBCM) services. This program was developed by the North Carolina Division of Public Health and the North Carolina Division of Medical Assistance. It is designed to assist pregnant women with Medicaid who have high risk factors to achieve a healthier pregnancy. The Pregnancy Care Management Program is a new form of Maternal Care Coordination Program previously offered by the Health Department. OBCM is staffed by registered nurses.

The Pregnancy Care Management Program targets pregnant women who have high risk factors that could cause a difficult pregnancy.

Risk factors may include:

- A history of preterm birth (less than 37 completed weeks). *17P* is offered. It has a series of weekly injections offered to women who have had previous preterm labor/ or deliveries
- Multiple gestation, such as a twin or triplets
- Fetal complications
- Chronic medical and/or behavioral health conditions which may complicate pregnancy
- Unsafe living environment (violence abuse or homelessness/ unstable housing)
- Substance use or tobacco use
- Late entry to prenatal care (after 14 weeks)
- Missing two or more prenatal appointments without rescheduling
- Inappropriate/ multiple use of hospital services

The services are available to any woman with Medicaid that live in Sampson County, regardless of the location of her prenatal provider. Sampson County Health Department has a grant which serve the non-Medicaid population. The criteria for the population are the same as the Medicaid population.

Effective March 1, 2011, OBCM transitioned from billing in units to Division of Medical Assistance (DMA) reimbursing the health department on a per-member, per-month system. Since the initiation of the new program, OBCM has provided services to 342 participants.

2009-2010
6,975

2010-2011
3,843 units

WOMEN, INFANTS, AND CHILDREN (WIC)

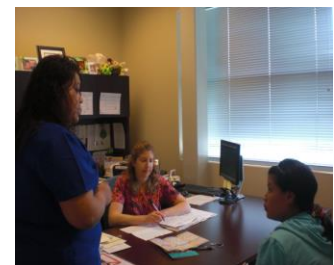
WIC is the Special Supplemental Nutrition Program for Women, Infants, and Children funded by the United States Department of Agriculture. The WIC program serves pregnant and post-partum women, infants, and children up to 5 years of age. The WIC program provides vouchers for nutritious foods such as milk, eggs, whole grain breads and cereals, 100% juice, beans and/or peanut butter, and fruits and vegetables. Vouchers for infant cereal, fruits, and vegetables are provided for infants once they become six months of age.

In addition to healthy foods, WIC provides services such as breastfeeding support, nutrition education, and referrals to other program such as Medicaid, SNAP (food stamps), medical and dental care, and immunization.

Breastfeeding promotion and support is an integral part of the WIC Program. WIC strives to increase the initiation, duration and exclusivity of breastfeeding among women enrolled in the Program. All WIC agencies have trained personnel ready to assist mothers in making informed decisions about their infant feeding choice. WIC also instructs mothers in the basics of breastfeeding. Sampson County WIC program has a breastfeeding peer counselor support program that provide mother-to-mother counseling. In addition, all local WIC agencies provide breastfeeding aids such as manual and electric breast pumps. WIC offers a food package for women who exclusively breastfeed their babies. This food package adds tuna or salmon in cans or pouches, as well as additional amounts of whole grains, cereal, milk, cheese, juice, peanut butter, beans, peas and lentils. While breastfeeding is highly encouraged, infant formulas are available for non-breastfeeding mothers.

To apply for WIC, applicants must be residents of Sampson County. Participants must meet all of the eligibility requirements which include categorical, residential, income, and nutritional risk. Appointments include medical history, lab data, and nutritional assessment. WIC is an equal opportunity provider.

Statistics:	2010	2011
Caseload	1930-2,097	1,822-2,040
Women	479	452
Infants	502	517
Children	998	965
BFPC	62	169



WOMEN'S PREVENTIVE HEALTH (FAMILY PLANNING)

The Women's Preventive Health Program (Family Planning) provides services to women of child-bearing age. This program offers opportunities and assistance for women to utilize contraception and also to voluntarily plan their pregnancies. The coordinator of the program works with the health department staff to ensure clients receive quality health and educational care.

Clinical services include physical exams, laboratory services, pap smears, STD screenings, contraceptive method and educational information. Clients receive information regarding their chosen contraceptive method, self-breast exams, HIV/STD, abstinence for teens, weight/BMI and nutrition.

Statistics:	2009-2010	2010-2011
Family Planning Visits	4,600	3,710



IMMUNIZATIONS

The Immunization Program had a successful year protecting Sampson County residents from vaccine preventable diseases. The Sampson County Health Department strives to vaccinate every child and adult to prevent unwanted and preventable diseases. The North Carolina Immunization Registry (NCIR) is utilized to track immunizations and vaccine inventory. The Sampson Health Department assessment rate for 2011 was 91%. Sampson County residents should be educated on the importance of vaccinations and keeping the vaccines current.

Immunizations are administrated by appointments Monday through Friday. The Health Department stocks state and private vaccines. Medicaid and third party payors are accepted.

Statistics	2009-2010	2010-2011
DTaP	235	209
Hepatitis A	527	391
Hepatitis B	252	276
Twinrix	568	147
HIB	120	67
HPV	148	245
Influenza	3,144	1,120
Meningococcal	184	164
MMR II	519	282
Pneumovax	42	26
Pevnar	146	200
Polio	22	65
Rabies	3	45
Rotavirus	46	34
Td	261	229
Tdap	653	424
Varicella	303	182
Zostavax	14	7
Proquad	0	148
H1NI	4,154	0
Total Vaccines	11,363	4,263
Total Clients	7,174	2,321

DIABETES SELF-MANAGEMENT PROGRAM

The Diabetes Self-Management Program (DSMP) of the Sampson County Health Department (SCHD) has been serving the residents since September 2008. The program focuses on empowering diabetic patients through education and demonstrations on self-management. Patients receive information on monitoring, meal planning, medications, complications, sick days care, exercising, and stress management. The program begins with one-on-one assessment, then with a comprehensive group class, followed by a three month return visit. An annual refresher is offered, based on program completion. Patients stay in continuous contact with our staff to ensure positive progress. The goal is to decrease blood pressure, blood glucose, A1C's, total cholesterol, weight and body mass index (BMI). Another goal is to increase daily self-foot exams. Our educators (Registered Nurse, Registered Dietitian, and Health Educator II) are trained and experienced in caring for the needs of diabetic patients.

Medical Nutrition Therapy (MNT) is a component of the DSMP. It is a comprehensive health care service that provides Type 1, Type 2, Gestational Diabetes Mellitus, and individuals with a variety of conditions and illnesses that can improve their health and quality of life by receiving medical nutrition therapy. MNT can increase consumer's health and well-being, and increase productivity and satisfaction levels through decreased doctor visits, hospitalizations and reduced prescription drug use. MNT is provided by a Registered Dietitian (RD), who must be licensed by the state of North Carolina.

The DSMP and MNT accepts Medicare, Medicaid, and 3rd party private insurance. Services are offered to all patients referred by their physician. Fees are based on a sliding fee scale.

Statistics:	2009-2010	2010-2011
Classes	10	14
Participants (assessments & classes)	60	205
Health Fairs	3	4
Diabetes Activities	2	6
Medical Nutrition Therapy (MNT)	19	17
Total	94	246



COMMUNICABLE DISEASE

Sampson County Health Department (SCHD) is responsible for the surveillance, reporting, investigation and follow-up of communicable disease in our county. The Health Department Communicable Disease Program follows current state laws and recommendations of the CDC and the NC Department of Health and Human Services Division of Public Health.

The Health Department's CD Program staff strives to prevent the spread of communicable disease in Sampson County. The CD Program staff works with the public to prevent, manage, and provide treatment for cases and contacts to communicable diseases.

Appropriate authorities are notified of the occurrence of specific communicable diseases. The CD Program staff uses the North Carolina Electronic Disease Surveillance System (NCEDSS) for monitoring, managing and reporting of diseases in Sampson County.

Statistics:	2009-2010	2010-2011
Rabies exposure	0	0
Hepatitis A/B	2	6
Pertussis (Whooping Cough)	5	1
Contacts Treated	0	23
Clinic Visits	56	16
Salmonellosis	12	29
H1N1 Cases	1	0
Listeriosis	2	0
Campylobacter Infection	3	11
Total	81	86

TUBERCULOSIS (TB) PROGRAM

The Sampson County Health Department TB Program works diligently to help ensure the citizens of this county live Tuberculosis (TB)-free. TB Program staff strives to prevent Tuberculosis infection by educating the public, providing TB Skin testing, following up on positive skin test results, as well as treating latent TB infection and active TB disease.

The TB/CD Program staff works with the public to prevent and control the spread of Tuberculosis, and is responsible for the monitoring and reporting of TB in Sampson County. The TB/CD Program staff accesses and reports information concerning TB cases in Sampson County through the North Carolina Electronic Disease Surveillance System (NCEDSS).

For 2010 – 2011, Sampson County’s TB disease new cases of seven were equal to the previous year’s total.

Statistics:	2009-2010	2010-2011
Cases	7	7
Chest X-ray	34	31
Directly Observed Therapy	1,406	431
Medication Refill	45	174
TB Skin Test	1,051	969
Total	2,543	1,612



SEXUALLY TRANSMITTED DISEASE (STD)

The Sampson County Health Department STD Program offers clients both screening and treatment for sexually transmitted diseases assessment, testing, treatment and education for clients, their contacts and the community. HIV/ STD services are provided at no charge to clients, according to CDC, NC HIV/STD Branch guidelines and NC Communicable Disease laws and administrative rules. Clients can be tested for HIV, Chlamydia, Gonorrhea, Syphilis, Trichomoniasis, Candidia, Genital Warts, Herpes, and Bacterial Vaginosis. The purpose of the STD Program is to reduce the incidence of STDs in Sampson County by providing preventive and therapeutic treatment for all reported cases and contacts. Increased awareness of preventive behaviors by education to individuals and the community is also an important purpose of the program.

The STD Coordinator works closely with physicians, hospitals, and other providers to provide treatment to STD cases and their contacts. The Coordinator tracks reported STD cases and ensures communicable disease reports have been furnished by providers for positive STD tests results. The information on positive STD cases for Sampson County into NCEDDS- The North Carolina Electronic Disease Surveillance System. The STD Coordinator is also responsible for working closely with the state's Disease Investigation Specialists (DIS) in providing information to the DIS that allows them to contact cases of HIV and Syphilis and get source and contact information.

Clients can be seen Monday – Friday by both appointments and on a walk in basis.

Statistics:	2009-2010	2010-2011
Chlamydia	249	259
Gonorrhea	81	92
AIDS	7	6
HIV	9	12
NGU	0	0
Syphilis	10	14
STD Screenings	866	585
Total	1,222	968



LABORATORY SERVICES

The Health Department's Clinical Laboratory is the threshold of well-being for our clients. The lab performs test that include, Hematology, Urinalysis, Urine HCG, RPR, and Glucose testing. Drug Screenings for Division of Child Protective Services are also provided. Laboratory staff is responsible for all laboratory specimens and reports. The health department uses reference labs for additional services.

Statistics:	2009-2010	2010-2011
Hemoglobin	1,518	887
Urine Dipstick	3,287	2,342
Urine HCG	707	647
Glucose	316	216
RPR	2,412	2,516
Wet Mount	572	518
GC Culture	210	203
GC Stat Male	27	34
Drug Screens	90	141
Total	9,139	7,504



OTHER HEALTH DEPARTMENT SERVICES

HEALTH PROMOTION

The Health Promotion Program is supported by the NC Physical Activity and Nutrition Branch. This program implements community-based policy and environmental health promotion interventions. The Health Promotion Coordinator's primary focus is to address major chronic disease factors such as physical inactivity, poor nutrition and tobacco use. This program produces policy and environmental changes by providing and promoting various community programs, presentations, activities and events.

- Partnered with daycare facilities to develop policies to increase fruit and vegetable consumption after reviewing NAP SACC evaluation
- Partnered with NC Cooperative Extension to conduct Eat Smart Move More Weigh Less classes at the Center for Health and Wellness

HEALTH EDUCATION

The Health Education Division provides a health professional that uses evidence-based strategies to support and improve the health and well-being of individuals and communities. The Health Education Department works with health department programs, other government agencies and community partners to provide educational opportunities to the residents of Sampson County. Some of the opportunities offered were:

- National Heart Health Month Awareness
- Hypertension/High Blood Pressure Education
- Prostate Cancer Awareness
- Public Health Month activities
- Breast Cancer Presentations
- CPR classes
- Supervising Senior Projects



ENVIRONMENTAL HEALTH

North Carolina Department of Environment and Natural Resources conducted program reviews for our Environmental Health Section in preparation for accreditation. During October 2010, the county's onsite wastewater program and the private drinking water program were evaluated by the state's Program Improvement Team. The team spent the week auditing records, reviewing procedures and conducting field inspections with our staff. The Sampson County Environmental Health Section received great reviews and was commended for their high level of professionalism in performing the state mandated programs.

The Food and Lodging Program also was evaluated with a comprehensive program review. The Regional Environmental Health Specialist spent seven days during March, 2011, auditing our program. The state specialist went out daily with count Environmental Health Specialist conducting inspections to verify their knowledge of statues and procedures. Staff was commended for maintaining a 100 percent inspection rate for over three years. Also, county staff was praised for their rapport with facility operators and communication skills in promoting Public Health.

Food & Lodging Activities

Restaurants	345
Food Stands	15
School Lunch	91
School Building	14
Meat Markets	35
Residential Care	15
Lodging	5
Nursing Homes	13
Hospital	3
Daycares	70
Swimming Pools	28
Migrant Camps	82

Total Inspections 716
Total Visits 580

Total Activities 1296

Sewage Activities

Site Visits	356
Site Evaluations	382
Permits	312
Operation Permits	265
System Inspection	158

Total Activities 1473

Well Activities

Site Visits	526
Permits	81
Samples	345

Total Activities 952



ORAL HEALTH PROGRAM

The focus of the North Carolina Oral Health Program is to promote conditions in which all North Carolinians can achieve oral health as part of overall health.

To this end, the NC Oral Health Section provides efforts to increase access to dental care and use scientifically based primary prevention and integrated educational services. These services in Sampson County are provided by a Public Health Dental Hygienist. Services include education for children and adults, dental screenings and referrals for school children, coordination of the Fluoride Mouth Rinse Program in targeted schools, and the promotion of the use of dental sealants and community fluoridation.

Statistics:	2009-2010	2010-2011
Dental Health Screenings	2,000	1,903
Education:		
Children	4,000	3,800
Adults	75	150
 Fluoride Mouth Rinse Program:		
Number of Schools Participating	5	5
Number of Students	2,400	1,900



VITAL RECORDS

Vital Records processes certificates for all births and deaths occurring in Sampson County. The Deputy Registrar is responsible for obtaining and preserving documentary evidence concerning all births and deaths occurring in Sampson County that protect the legal rights of individuals and provide a sound statistical basis for health and social planning. These records (except for fetal death reports) are filed permanently in the Vital Records Branch (Raleigh, NC) and certified or verified on demand.

Statistics:	2009-2010	2010-2011
Births	415	438
Deaths	423	419
Fetal Deaths	2	5



PUBLIC HEALTH PREPAREDNESS AND RESPONSE (Bioterrorism)

The Sampson County Health Department works diligently to protect the citizens of Sampson County from natural or man-made events that can affect their well-being. During the past year, the Health Department has partnered with several agencies to provide exercises, such as “Hurricane Debbie” in November to help prepare the county in the event of a disaster. Agencies participating included Sampson Regional Medical Center, Sampson County Emergency Management & EMS, city, county and state law enforcement agencies, medical providers, public works, the court system, veterinarians, government officials, private businesses, the school systems and private citizens. The Health Department also participated in a statewide exercise, Hurrex in May that involved law enforcement, EM, EMS and public health officials from across the state.

The Health Department continues to work with EM and DSS to address Sampson County’s special needs population by providing a plan to address their needs during a disaster.

During the past year, the entire statewide Public Health Preparedness and Response Branch has undergone major changes with reorganization at all levels. The state no longer has 7 PHRST Teams in place. The counties have been divided into 3 regions and the Charlotte Urban area. Sampson County now belongs to “PHPR Region 1,” a 33 county region.

The Health Department continues to monitor for diseases and outbreaks, providing surveillance to detect dangers for Sampson County residents.

The Sampson County Strategic National Stockpile Plan and the Sampson County Pandemic Influenza Plan have been updated and sent to the state for approval.

The Sampson County Health Department will continue to work very hard to help ensure the public health and safety of our county’s residents by providing surveillance for any threat to residents and by participating in every area available to keep updated on the concerns that can affect Sampson County.

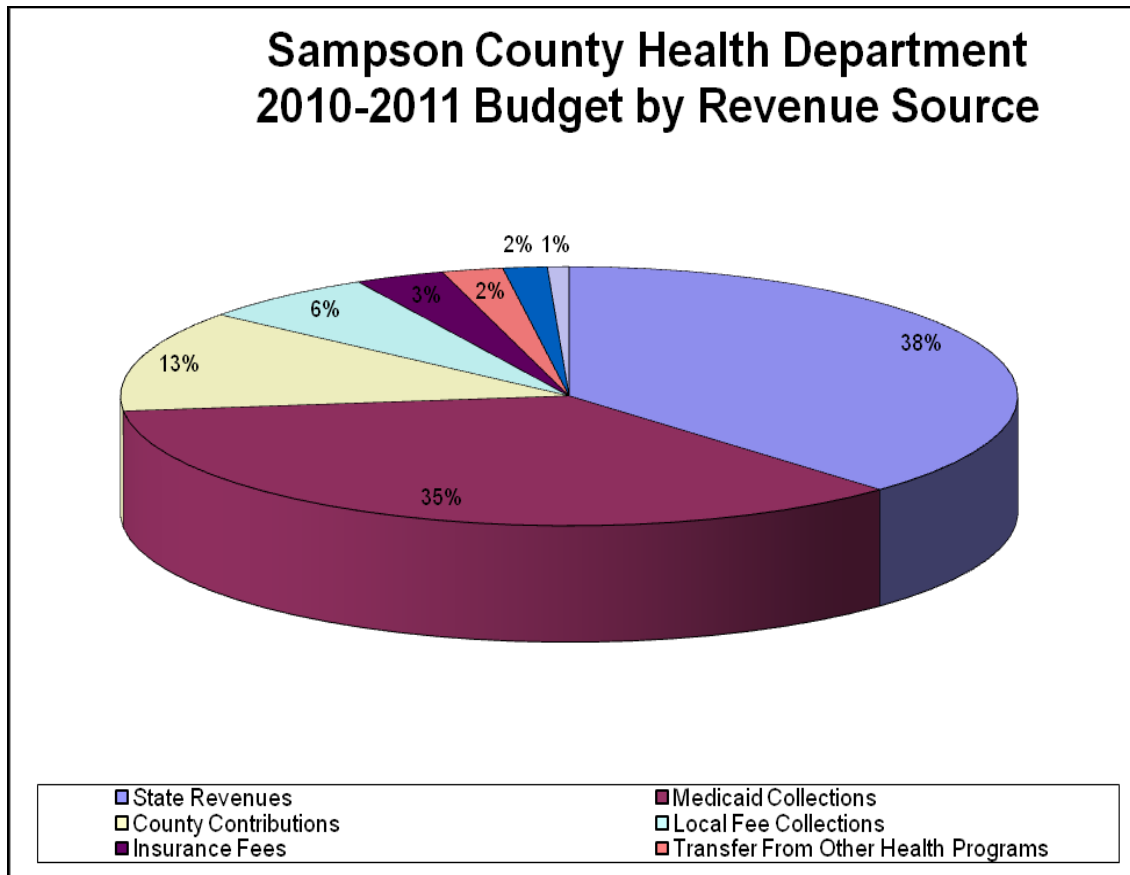
BUDGET

Total Budget

Total Dollar Amount of Entire budget	\$3,905,972
Total Amount of Program Costs	3,027,473
Total Solid Waste Budget	878,499

TOTAL AMOUNT OF PROGRAM COST BY REVENUE SOURCE

State Revenues	38%	\$1,146,020
Grant/Misc Revenues	1%	23,500
Projected Local Fee Collections	6%	193,600
Projected Medicaid Collections	35%	1,067,811
Insurance Fees	3%	97,702
Fund Balance - Local Fees	2%	48,204
Transfer From Other Health Programs	2%	66,797
County Contributions	13%	383,839
Total		3,027,473



Budget Breakdown

Salary and Fringe Benefits	75%	\$2,256,701
Operating Expenses	25%	770,772

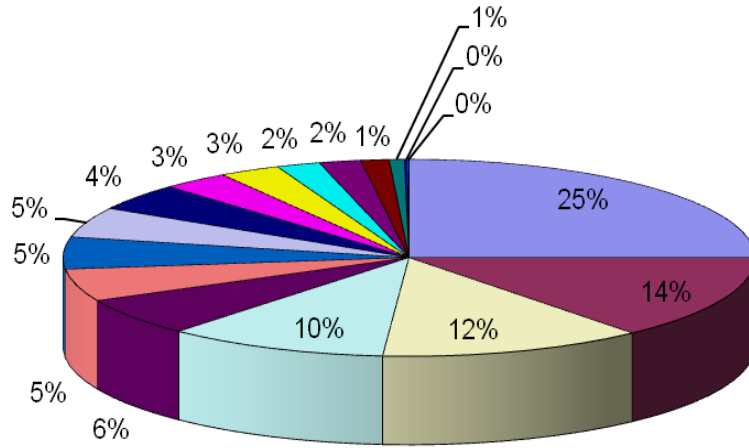
County Appropriations Breakdown

Environmental Health	75%	\$288,350
Clinical Programs	25%	95,489

TOTAL BUDGET BY PROGRAM

General Administration	5%	\$159,349
Diabetes Self Management Program	3%	\$94,427
TB - CDC	2%	58,900
TB - Medical Service	0%	2,271
Communicable Disease	6%	189,211
Adult Health	3%	86,408
Health Promotion	1%	40,098
Breast & Cervical Cancer	1%	21,370
Healthy Carolinians	0%	4,100
Immunization	2%	61,566
Maternal Health	25%	757,030
Family Planning	11%	313,133
WIC	12%	373,906
Child Service	5%	150,028
Child Health	5%	160,257
Environmental Health	14%	419,555
Public Health Preparedness & Response	5%	135,864
Total Budgeted		\$3,027,473

Sampson County Health Department 2010-2011 Budget by Program



MH	EH	WIC	FP	CD
CH	GEN	CSC	PHP&R	DSMP
AH	IMM	TB-CDC	HP	BCCCP

STATE REVENUE

General Administration	15%	\$143,349
Diabetes Self Management Program	0%	1,000
TB - CDC	3%	39,133
TB - Medical Service	0%	2,271
Communicable Disease	6%	64,322
Health Promotion	3%	34,089
Breast & Cervical Cancer	2%	17,870
Healthy Carolinians	0%	1,100
Immunization	2%	21,008
Maternal Health	12%	132,489
Family Planning	13%	149,027
WIC	33%	373,906
Child Service	1%	16,114
Child Health	0%	873
Environmental Health	1%	13,605
Public Health Preparedness & Response	12%	135,864
Total State Revenue Budgeted		\$1,146,020



**Sampson County Health Department
EveryWhere.EveryDay.EveryBody**